



WE NEVER STOP WORKING FOR YOU

# DuraPack<sup>®</sup> 5000

High-Compaction Rear Loader

a DOVER company



Environmental  
Solutions Group<sup>®</sup>

a DOVER company

The unrivaled workhorse of the waste industry.

[www.Heil.com](http://www.Heil.com)

# DuraPack<sup>®</sup> 5000

The unrivaled workhorse of the industry.

With nearly 30 years of reliability and over 20,000 units built, the Heil<sup>®</sup> DuraPack 5000 high-compaction refuse vehicle has become the mainstay of collection fleets, from small independent haulers to the world's largest municipal fleet.

**Built to last.** The DuraPack 5000 features the Heil DuraPack body, which includes a fully welded, interlaced subframe. With formed channels for extra strength, high tensile strength steel to maximize performance at a minimum weight, and superior resistance to corrosion and cracking, the DuraPack 5000 is a sturdy package with the stamina to absorb years of tough hauling.

**Outstanding weight distribution.** Incorporating a high cylinder mount into a compact design with a short overhang creates outstanding weight distribution and reduced wear on rearward chassis components. This maximizes forward loading of both the body and the payload.

**In-Sight<sup>™</sup> Display.** Now, the Heil In-Sight Display provides enhanced troubleshooting capabilities that can all be performed from within the safety of the cab. This is made possible by the recently upgraded remote mobile controller, which eliminates the need for a PDC box. The mobile controller provides two-way communications, and critical information directly to the display, eliminating relays and associated failures. All in-cab switches are conveniently located within the Heil In-Sight Display. This enhanced design allows for future additions, which in the past would have required the addition of an inconveniently placed auxiliary switch, on an already crowded dash. Now all this can be done in one, easy to access, in-cab display.

The DuraPack 5000 and all Heil products are Connected Collections<sup>™</sup> ready. This is part of our vision focused on helping fleet owners make better decisions, faster. Contact your local Heil dealer for more information, or visit [www.heil.com/connected-collections](http://www.heil.com/connected-collections).



## The Heil<sup>®</sup> DuraPack<sup>®</sup> 5000 Design, performance and reliability that works for YOU.



### Add 3rd Eye<sup>®</sup> Digital Packages

Connect for service verification, body/chassis data, fuel tax reporting, and route management. Includes factory installed 3rd Eye Mobile, with the ability to connect up to eight cameras.



### Add 3rd Eye<sup>®</sup> Collision Avoidance Radar

3rd Eye family of Integrated Collision Avoidance Radar Systems protect both your drivers, your assets, and those in close proximity to your vehicle, using existing 3rd Eye Mobile camera cables.



### Add Roof Or Front Of Body CNG System

This system enables your CNG refuse fleet to deliver the same productivity you would expect from a diesel unit, while saving money with clean, domestic, compressed natural gas as fuel.



### Add Bayne Thinline<sup>®</sup> Premium Cart Tipper

Outfit your truck with a single or dual Bayne Thinline<sup>®</sup> premium mobile lifters and reduce the stress and strain on personnel who manually load the vehicle, and increase route efficiency.

# Smarter By Design, With Loyalty Built In

The DuraPack® 5000 was specifically designed to maximize your efficiency on daily collection routes.

## DuraPack® 5000



## Reliable Rear Loader Performance

### + IN-SIGHT™ DISPLAY

The In-Sight display allows for enhanced troubleshooting from the safety of the cab. This refresh also moved all in-cab switches to the In-Sight Display, allowing for constant modification.



### + TIME SAVER

The DuraPack 5000 features a flat, abrasion-resistant steel floor, which eliminates the messy job of cleaning trash buildup out of dirty troughs.

### + SUPERIOR FILTRATION

Our three-micron filtration system keeps oil cleaner, and extends the life of hydraulic components. Other manufacturers use 10-micron filtration, which can allow particulate matter to damage the hydraulic system.

### + ONE-HANDED MANUAL PACKING

Convenient one-handed manual controls stop, start, or reverse the upper panel or sweep panel at any point in the packing cycle.

### + COMMERCIAL CAPABILITIES

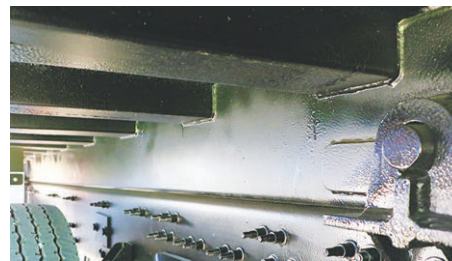
With one of the optional Commercial packages, the DuraPack 5000 can easily handle commercial containers. Packages can include a reeving system, winch, or roll bar coupled with a lip and latch kit.

## Discover What Sets The DuraPack® Apart



### HIGH CAPACITY HOPPER

The generous 3.94-cubic-yard hopper can accommodate large items with ease, and requires less cycling on the route.



### DURABILITY AND LONGEVITY

Our exclusive, fully welded, interlaced subframe provides exceptional longevity, while resisting abrasion, corrosion, and salt damage. The body is constructed of 7-8 ga. high tensile strength steel, while the hopper features 1/4" thick AR400 steel on the floor, and 3/16" thick AR400 steel on the sides for superior strength and durability.



### MORE PACKING POWER

The Heil® Linkage Packing System is a proven performer. It has no rollers, slides, or slide shoes to wear out. Smaller cylinders deliver considerably more packing power for increased payloads.



### SERVICE SMART SIDE DOOR

Our Service Smart design simplifies routine maintenance, keeping your truck away from the shop, and out servicing your customers, making money. The side door provides easy access for common maintenance tasks.

# DuraPack® 5000 Specifications



## Performance Specifications

<b>Compaction</b>	1,000 + lbs. per yd <sup>3</sup>
<b>Hopper Size</b>	3.94 yd <sup>3</sup>
<b>Packing Cycle Time</b>	16 -18 seconds*
<b>Reload Time</b>	6 - 8 seconds*
<b>FET Exempt</b>	18 yd <sup>3</sup> and 20 yd <sup>3</sup>
* with fast cycle pump option	

All designs, specifications, and components are subject to change at the manufacturer's sole discretion at any time without notice. Data published herein is for information purposes only and shall not be construed to warrant suitability of the unit for any particular purpose, as performance may vary with the conditions encountered. The only warranty is our standard written Warranty Statement for this product at the time of shipment. \*Heil does not provide tax advice. Please consult your tax advisor regarding the specific tax implications of your selected product.

## Hydraulic Specifications

<b>PUMP</b>	
<b>Type</b>	High pressure gear
<b>Maximum Operating Pressure</b>	2,500 psi
<b>GPM</b>	42 GPM
<b>OIL RESERVOIR</b>	
<b>Tank Capacity (net)</b>	50 gallons (190 liters)
<b>Filters</b>	3-micron return filter with in-cab filter monitor; 140-micron suction line
<b>VALVES</b>	
<b>Shutoff</b>	Ball valve in suction line between pump and reservoir
<b>Packing Control</b>	Spool type
<b>Ejector and Tailgate Raise</b>	Spool type

## Tailgate Specifications

<b>Hopper Capacity</b>	yd <sup>3</sup>	3.94
	m <sup>3</sup>	3.01
<b>Sill Height Below Chassis Frame</b>	in.	3.8
	mm	97
<b>Hopper Loading Width</b>	in.	80
	mm	2,032
<b>Hopper Opening Height</b>	in.	55
	mm	1397
<b>Cycle Time (seconds)</b>	complete	16 - 18*
	reload	6 - 8*
* with fast cycle pump option		

Typical Chassis Configuration			18 yd <sup>3</sup>	20 yd <sup>3</sup>	25 yd <sup>3</sup>	27 yd <sup>3</sup>	32 yd <sup>3</sup>
<b>Minimum GVWR <sup>(1)</sup></b>			48,000	51,000	54,000	57,000	62,000
<b>Minimum GAWR</b>	Conventional	front	12,000	13,000	14,000	15,000	16,000
		rear	36,000	38,000	40,000	42,000	44,000
	Cab-Over Engine	front	14,000	15,000	16,000	17,000	18,000
		rear	34,000	36,000	38,000	40,000	44,000
<b>Usable CA</b>	in.	127 ± 3	N/A	N/A	N/A	N/A	
	mm	3,149 - 3,302	N/A	N/A	N/A	N/A	
<b>Usable CT</b>	in.	108 ± 3	118 ± 3	153 ± 3	165 ± 3	193 ± 3	
	mm	2,667 - 2,819	2,921 - 3,073	3,810 - 3,962	4,115 - 4,267	4,826 - 4,978	
<b>C.O.E. Wheelbase</b>	in.	152 ± 3 (Single Axle) 133 ± 3 (Tandem Axle)	143 ± 3	178 ± 3	190 ± 3	218 ± 3	
	mm	3,785 - 3,937 (Single Axle) 3,302 - 3,454 (Tandem Axle)	3,556 - 3,708	4,445 - 4,597	4,750 - 4,902	5,461 - 5,613	
<b>Conventional Cab Wheelbase</b>	in.	192 ± 3 (Single Axle) 173 ± 3 (Tandem Axle)	183 ± 3	218 ± 3	230 ± 3	258 ± 3	
	mm	4,801 - 4,953 (Single Axle) 4,318 - 4,470 (Tandem Axle)	4,572 - 4,724	5,461 - 5,613	5,766 - 5,918	6,477 - 6,629	
<b>Minimum Platform</b>	in.	159 ± 3	169 ± 3	204 ± 3	216 ± 3	244 ± 3	
	mm	3,962 - 4,115	4,216 - 4,369	5,105 - 5,258	5,410 - 5,563	6,121 - 6,274	

Heil Environmental does not recommend mounting any chassis that does not meet the minimum GVWR/GVARs outlined above.(1) If CA/CT is not as recommended, contact Heil Environmental for applicable weight distribution and GVWR/GVAR requirements.

Body Specifications		18 yd <sup>3</sup>	20 yd <sup>3</sup>	25 yd <sup>3</sup>	27 yd <sup>3</sup>	32 yd <sup>3</sup>
<b>Body Capacity</b>	yd <sup>3</sup>	18	20	25	27	32
	m <sup>3</sup>	13.7	15.3	19.1	20.6	24.4
<b>Overall Length</b>	in.	225	235	270	282	310
	mm	5,715	5,969	6,858	7,163	7,874
<b>Overall Length With Tailgate Raised</b>	in.	275	285	320	332	360
	mm	6,985	7,239	8,128	8,433	9,144
<b>Overall Width</b>	in.	96				
	mm	2,438				
<b>Overall Height Above Frame</b>	in.	96				
	mm	2,438				
<b>Overall Height With Tailgate Raised</b>	in.	207				
	mm	5,257				
<b>Gross Weight (approximate)</b>	lbs.	14,300	14,800	15,500	15,900	17,200
	kg	6,487	6,727	7,045	7,227	7,818

## Cylinder Specifications

Body Cylinders	Type	Model	Stages	Bore	
<b>Tailgate Raise</b>	Single Acting	ALL	1	in.	4
				mm	102
<b>Packer Sweep</b>	3-Stage Double Acting Telescopic	ALL	4	in	5.5
				mm	140
<b>Upper Panel</b>	Double Acting	ALL	1	in	5
				mm	127
<b>Ejection</b>	Double Acting	18, 20, 25, 27 yd <sup>3</sup>	4	in	6
				mm	152
				in	7
		32 yd <sup>3</sup>	5	in	7
				mm	178
				mm	178



WE NEVER STOP WORKING FOR YOU

# DuraPack® 5000

High-Compaction Rear Loader



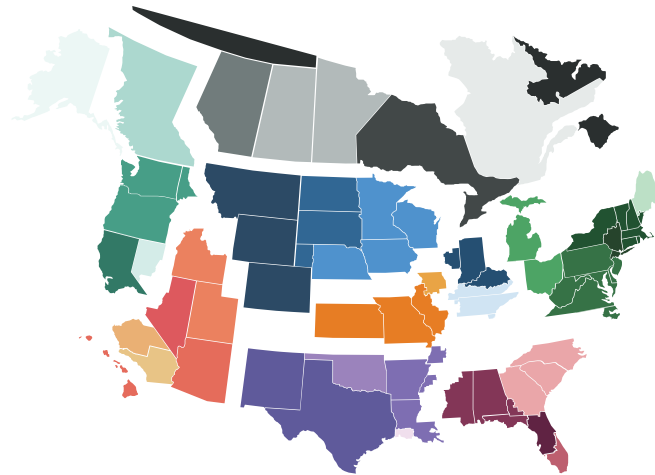
## EXPEDITE THE PURCHASE OF YOUR HEIL® UNIT THROUGH SOURCEWELL

Sourcewell Cooperative Purchasing Program has awarded Heil a nationally bid contract for “Solid Waste and Recycling Collection Equipment with Related Equipment, Accessories, and Supplies.” Through the Heil contract, Sourcewell members can purchase any of the Heil line of refuse and recycling equipment, including front-loading, side-loading, and rear-loading refuse collection vehicles, without having to create an RFP and send the project through a time-consuming duplicate bid process. By using the existing nationally bid contract, members can receive the products they need more quickly and cost effectively. Best of all, Sourcewell membership is free! Qualified agencies can join online via the Sourcewell purchasing website at [www.sourcewell-mn.gov](http://www.sourcewell-mn.gov). To find out more about purchasing Heil equipment via the Sourcewell contract, please contact your local Heil Dealer at [www.heil.com/dealers](http://www.heil.com/dealers).



## TRUST HEIL® CERTIFIED OEM PARTS

Heil Certified OEM parts are the most reliable replacement parts for Heil refuse collection vehicles. They're made following the exact specifications and production processes on the same assembly lines as the parts originally installed on the bodies. This means that they fit perfectly every time. Heil uses only the highest-quality materials for parts that last - minimizing costly downtime. For more information on parts, contact your Heil dealer. Visit: [www.heil.com/dealers](http://www.heil.com/dealers) to find the dealer nearest you.



## RELY ON EXPERIENCED LOCAL SUPPORT

When you buy from Heil, you gain the aftermarket support of the industry's strongest network of dealers in North America. We stand behind our dealers, so you get the product support you need for the life of your products. Our dealers are also trained to help you find the best product for your particular route needs. To find the Heil dealer nearest you, visit: [www.heil.com/dealers](http://www.heil.com/dealers).



All Heil products are Connected Collections™ ready. This is part of our vision, focused on helping fleet owners make better decisions, faster. For more information on ESG's Connected Collections, contact your local Heil dealer or visit us online at [www.heil.com/connected-collections](http://www.heil.com/connected-collections)

[www.heil.com](http://www.heil.com)



## COUNT ON THE LOWEST TCC

Helping you save money is our passion, and we apply tremendous resources to advance our product and service offerings to improve the profitability of your business and provide the lowest Total Cost of Collection and the maximum return on your investment. You can be confident that choosing Heil equipment brings a long-term partnership with the industry leader.



## CONFIGURATION ASSISTANCE

Chassis layout drawings are available through your local Heil dealer. To find your dealer, visit [www.heil.com/dealers](http://www.heil.com/dealers).



## INDUSTRY-LEADING TRAINING

Heil has completely revamped their training programs with the addition of both the Heil Service Shack™ and their four-tiered Nexteligenze® Connected-Tech Training Program. Now, customers can visit the Heil Service Shack on the Heil website to learn the latest techniques and view helpful service and training videos any time, as well as sign up for Connected-Tech courses to better train technicians on Heil Refuse Products. Ensure your shops are servicing your Heil products correctly; check out the Heil training offerings at [www.heil.com/nexteligenze](http://www.heil.com/nexteligenze).



a **DOVER** company

[www.heil.com](http://www.heil.com)

**Contact your Heil® authorized dealer:**